

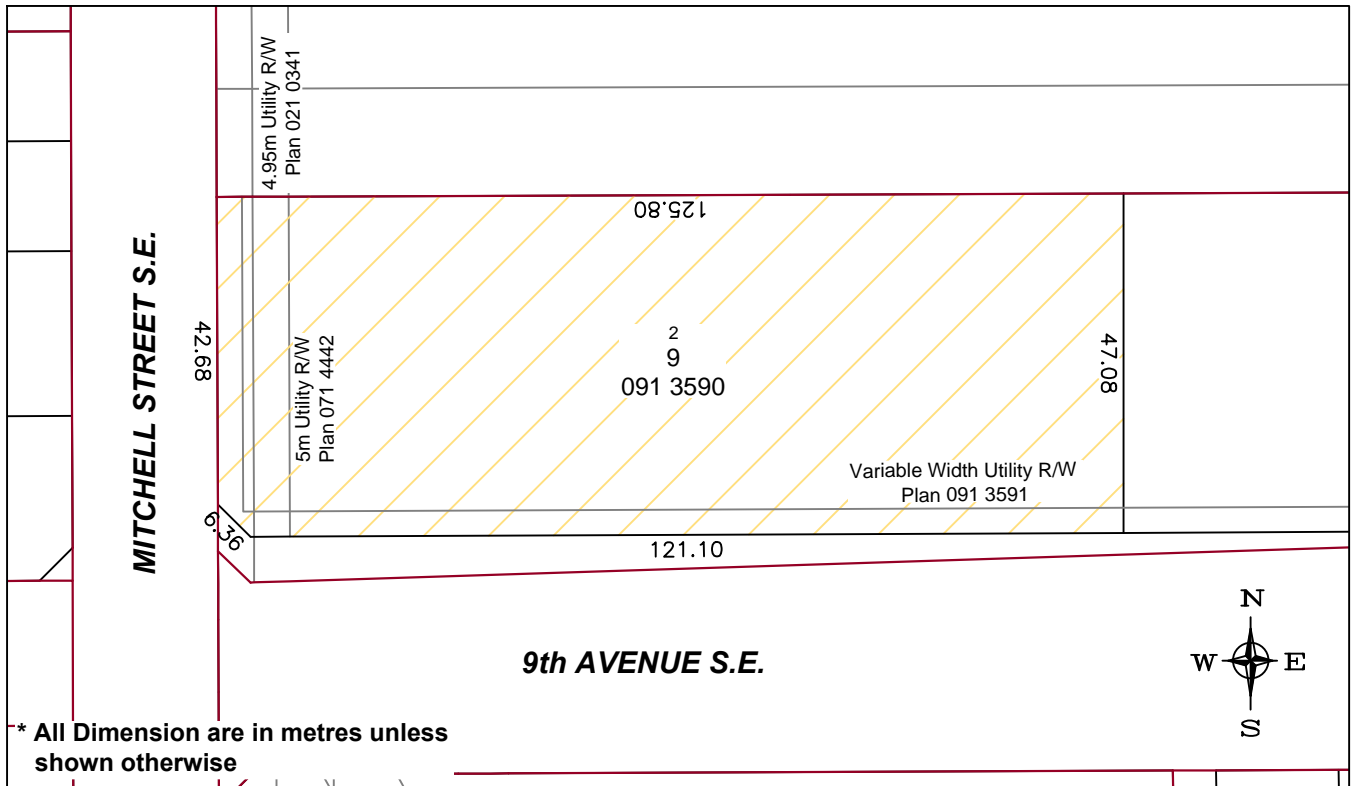
EASTSIDE PHASE 1



Lot 2, Block 9, Plan 0913590

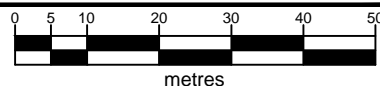
(717 9th Avenue S.E.)

- \$801,820.00 plus GST
- C-3 General Commercial District
- No discounts for right-of-ways to apply as they have been taken into consideration at the time of pricing.
- Fully Serviced



CAUTION
BOUNDARY INFORMATION PRODUCED FROM ALTALIS,
NOVEMBER 2010.
NOT BASED ON ACTUAL SURVEY.

AREA = 5915.03m²
1.46 Acres



TOWN OF REDCLIFF